

TCS 180

Ice Machine/Dispenser up to 120 kg

Item #:
Project:
Quantity:



FEATURES

- Automatic ice dispensing systems and self-service operations are becoming ever-more popular in modern Foodservice concepts.
- By far the dryest and hardest form of Flake ice, it is produced at just below zero degrees Celsius just like all other flake ice forms, but it is then compressed to remove excess residual water, reducing it to as low as 10% of its original volume.
- They allow customers to cool their drinks as per their own taste, making it easy and preventing any potential sanitary hazards: clear and pure ice bits drop directly into the consumer's glass, with no manipulation.
- Scotsman Ice dispenser TC180 is the Industry benchmark in the ice or ice and water dispensers segment.
- This line, in its different versions, is now available in the "Long Range" version that offers an unprecedented 9 kg in-built bin, keeping the same dimension as the original 5 kg version.
- For those locations where the dimension of the counter are limited, we are offering the "Short" version, whose depth has been reduced by close to 6 cm, allowing for installation on most counters. The capacity of the storage bin will not change though, granting the same amount (5 kg) of Scotsman "Cubelet" super compressed ice.
- Available in 3 configurations: ice & water touch free or manual, ice only touch free.



TC S-L 180 AS
Touch free dispensing model
- Ice & water configuration
- Easy clean



TC S-L 180 ASM
Manual version with 2 push buttons
- Ice & water configuration
- Easy clean



TC S 180 EVO
Touch free dispensing model
- Ice only configuration
- No push buttons in the front
- Easy clean
- Specific for self-service use



TCS 180
Cubelet 1 g
W 16 x D 15 x H 7-8 mm

CONDENSING SYSTEM

Air cooled

INTERNAL BIN CAPACITY

TCS 180 = 5 kg
TCL 180 = 9 kg

REFRIGERANT GAS

R134a

OPERATING REQUIREMENTS

	Minimum	Maximum
Air temperature	10°C	43°C
Water temperature	5°C	38°C
Water pressure	1 bar (14 psi)	5 bar (70 psi)
Electrical voltage	-10%	+10%

VOLTAGE V/Hz/ph

230/50/1
230/60/1

Certifications:



IMPORTANT NOTICE:
Models and specifications are subject to change without notice. This spec sheet is meant for commercial purpose only. For technical documentation please refer to our service manuals.

Download our free App Scotsman Ice
Apple store
Google play
Windows store



www.scotsman-ice.it
www.scotsman-ice.com

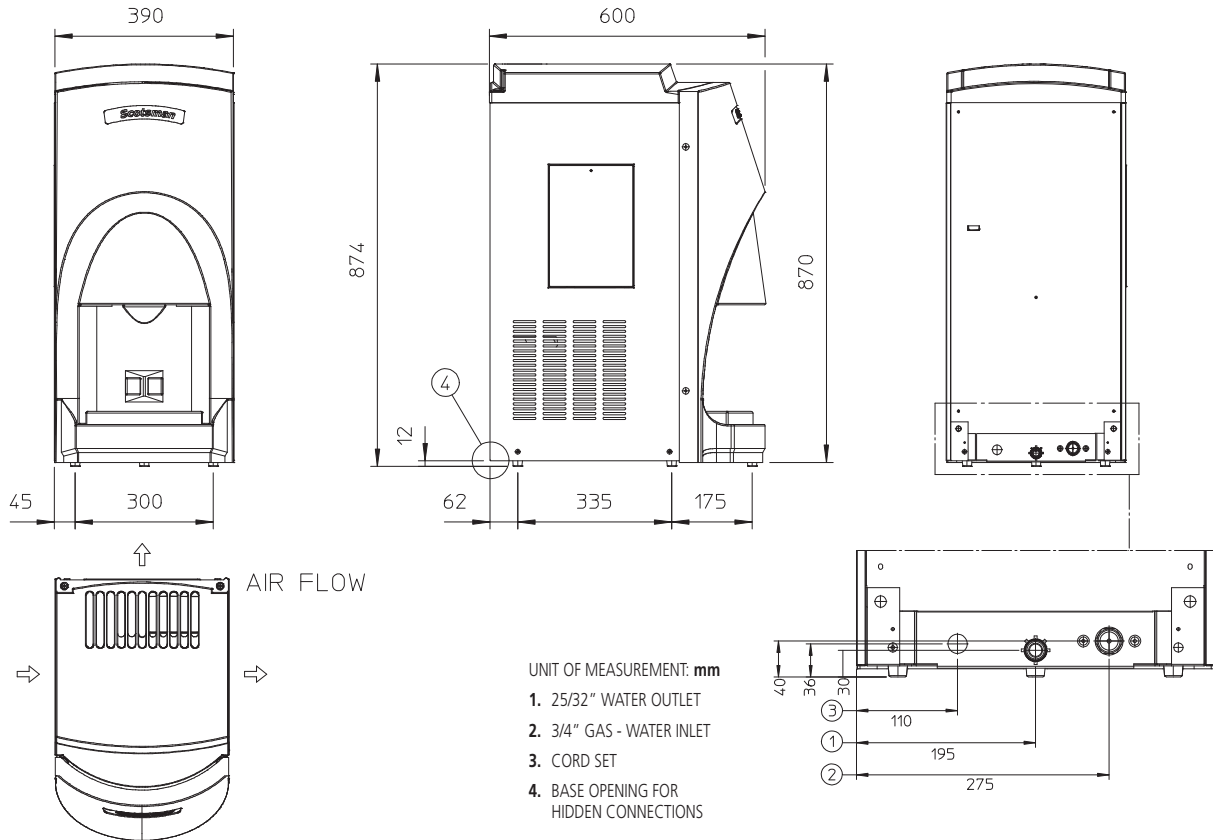
Ice Machine/Dispenser up to 120 kg

TCS 180

Ice Machine/Dispenser up to 120 kg

Item #:
Project:
Quantity:

Ice Machine/Dispenser up to 120 kg



UNIT DATA		Compressor		Circuit wires		Max. fuse size		
		Version	Voltage	Btu/h	W	No.	Ømm ²	A
Size (W x D x H)	390 x 600 x 874 mm	TCS 180 AS	230/50/1	4436	1300	3	1.5	10
Net weight	61 kg	TCS 180 EVO AS	230/50/1	4436	1300	3	1.5	10
		TCS 180 AS	230/60/1	4777	1400	3	1.5	10

SHIPPING DATA	
Carton (W x D x H)	460 x 730 x 1010 mm
Weight	70 kg

Version	Condensation	Voltage	24 h ice production kg °C Amb. / °C Water			Energy consumption*		Water usage*	Instant power
			10°C/10°C	21°C/10°C	32°C/21°C	kWh/100 kg	kWh/24h	l/h	W
TCS 180 AS	Air	230/50/1	120	114	86	13.4	11.5	4.2	500
TCS 180 EVO AS	Air	230/50/1	120	114	86	13.4	11.5	4.2	500
TCS 180 AS	Air	230/60/1	120	114	86	16.8	14.5	4.0	670

(*) Data refer to 32°C Amb. / 21°C Water temperature conditions